

Greater Sydney
Commission

Greater Sydney **Draft District Plan** Map Atlas

Co-creating a Greater Sydney

November 2016

DIS
VAL
TE



Greater Sydney Draft District Plan Map Atlas

November 2016 © State of New South Wales
through the Greater Sydney Commission

Copyright

This document was prepared by the Greater Sydney Commission. It contains information, data, pages and images ("the material") prepared by the Greater Sydney Commission (the Commission). The material is subject to copyright under the Copyright Act 1968 (Cth), and it is owned by the State of New South Wales through the Commission. The Commission encourages the availability, dissemination and exchange of public information. You may copy, distribute, display, download and otherwise freely deal with the material for any purpose, on the condition that you include the copyright notice "© State of New South Wales through the Greater Sydney Commission" on all uses.

You must, however, obtain permission from the Commission if you wish to:

- charge others for access to the work (other than at cost)

- include all or part of the work in advertising or a product for sale, or modify the work.

To obtain such permission, please contact us at: info@gsc.nsw.gov.au.

You may publish the material to another website, however if you publish an entire document or publication, we prefer you to make a direct link to the Commission's website to ensure that the latest version is always displayed.

This permission does not extend to copyright in the materials on the Commission's website that are owned by others.

Disclaimer

The Commission cannot and does not make any claim as to the accuracy, authenticity, currency, completeness, reliability or suitability of any material supplied by third parties or linked to third party sites. The Commission will not accept liability for any loss, damage, cost or expense that you may incur as a result of the use of or reliance upon the material in the draft district plan or any linked sites. Please also note the material may change without notice and you should use the current material from the Commission's website and not rely on material previously printed or stored by you.

The maps in this document are not intended to be used for site assessment at the property scale.

You can read the draft District Plans at:
www.greater.sydney
and send feedback:

by email:
engagement@gsc.nsw.gov.au

by post:
Greater Sydney Commission:
PO Box 257
Parramatta NSW 2124.

Before making a submission, please read our privacy statement at
www.gsc.nsw.gov.au/privacy

For more information:

visit www.greater.sydney

call us on 1800 617 681

email us:
engagement@gsc.nsw.gov.au

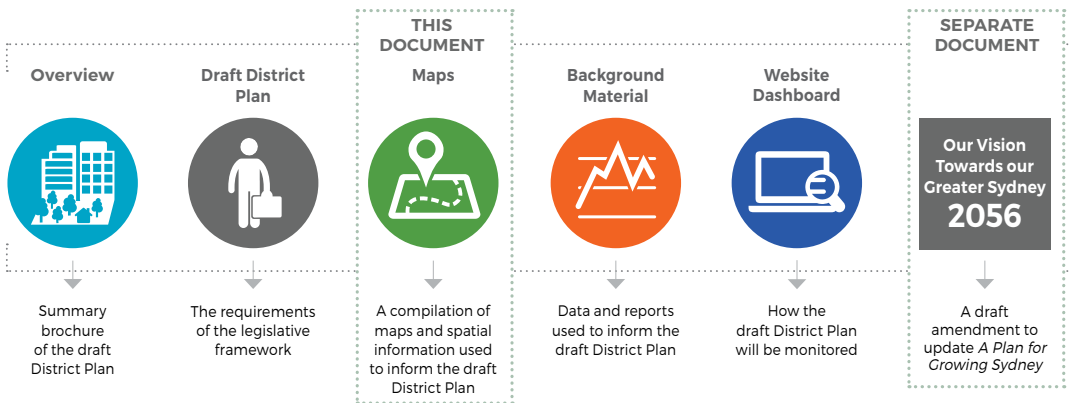
Foreword

Planning for Greater Sydney as a productive, liveable and sustainable city requires us to understand its trends and movements at a range of geographic scales.

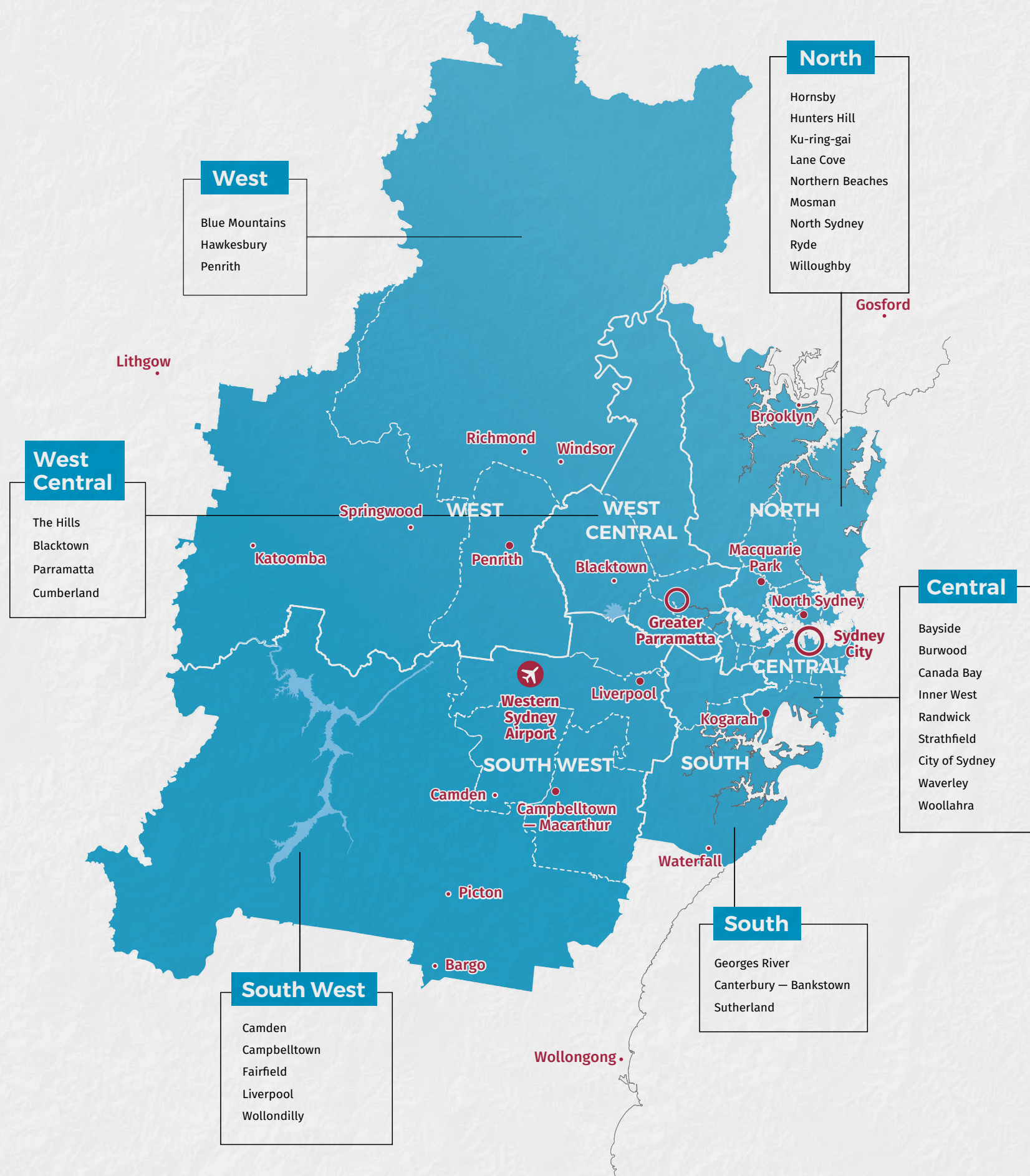
This map atlas illustrates Greater Sydney in terms of its landform, environmental features, open space areas, productivity measures and its key centres. These maps also show Greater Sydney's population now and projections for the future. The maps also identify Greater Sydney's housing market areas and net increase in housing in the last five years.

The map atlas includes each of Greater Sydney's six Districts in terms of their suburbs, centres and opportunities to connect open space areas through the Sydney Green Grid.

Greater Sydney Draft District Plan Map Atlas



You can view these supporting components, as well as *Our vision – Towards our Greater Sydney 2056*, our proposed 40-year vision for Greater Sydney, at **www.greater.sydney**.



Contents

Greater Sydney Maps

- Greater Sydney Landform
- Greater Sydney Land and Soil Capability (LSC)
- Greater Sydney Drainage Catchments
- Greater Sydney Hydrology
- Greater Sydney Gross Added Value
- Greater Sydney Labour Productivity
- Greater Sydney Local, District and Strategic Centres
- Greater Sydney District and Strategic Centres
- Greater Sydney Net Population Density
- Greater Sydney Propulation Projection
- Annual Population Growth Rate 2016 - 2036 Local Government Area
- Greater Sydney Net increase in Housing FY2011-2016
- Housing Market Areas
- Greater Sydney Interim Biogeographic Regionalisation for Australia (IBRA) Subregions
- Greater Sydney Land and Soil Capability
- Greater Sydney Public Open Space
- Greater Sydney Green Grid Opportunities

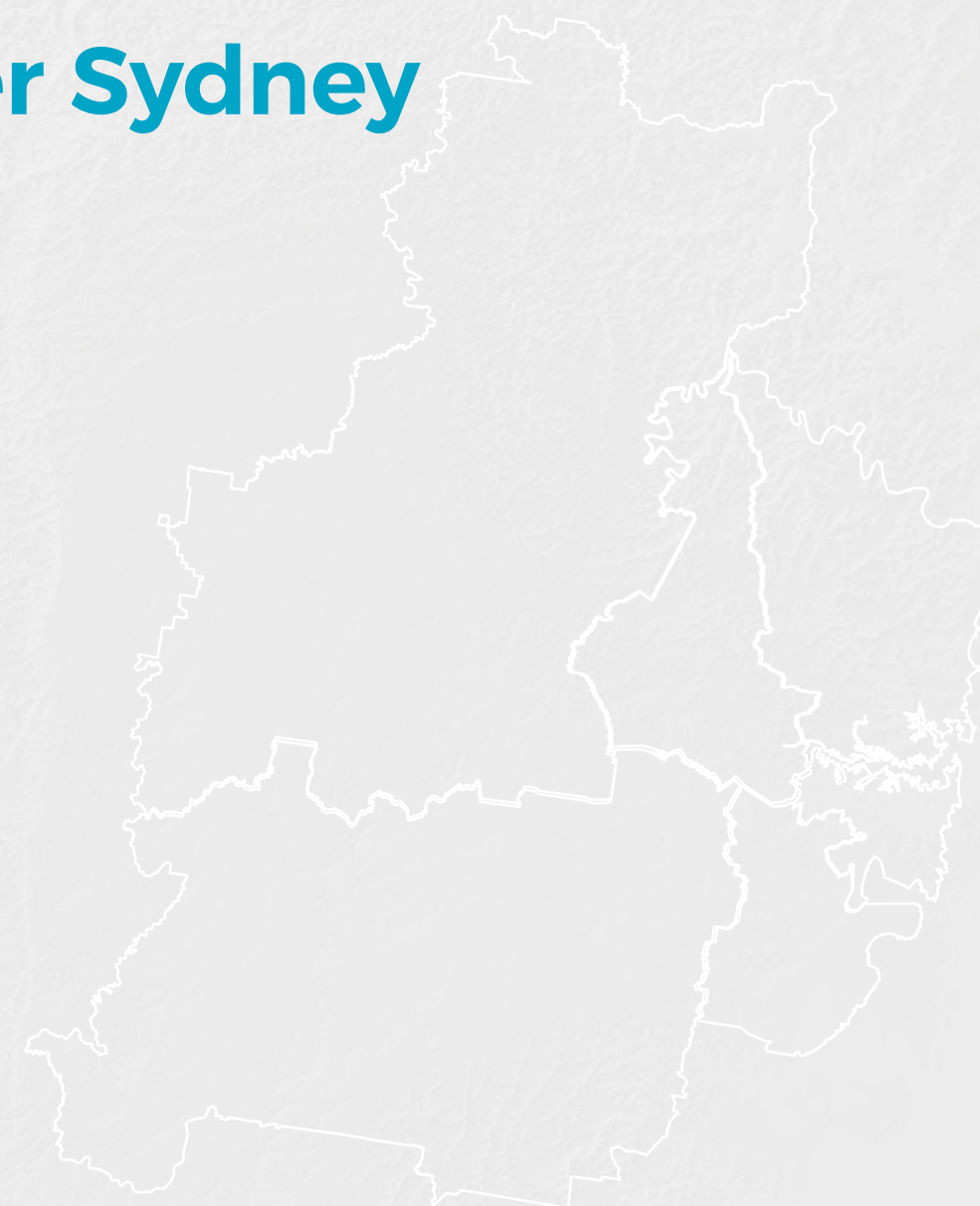
District Maps

- District Suburbs
- Centres
- Green Grid Opportunities



RENEWABLES

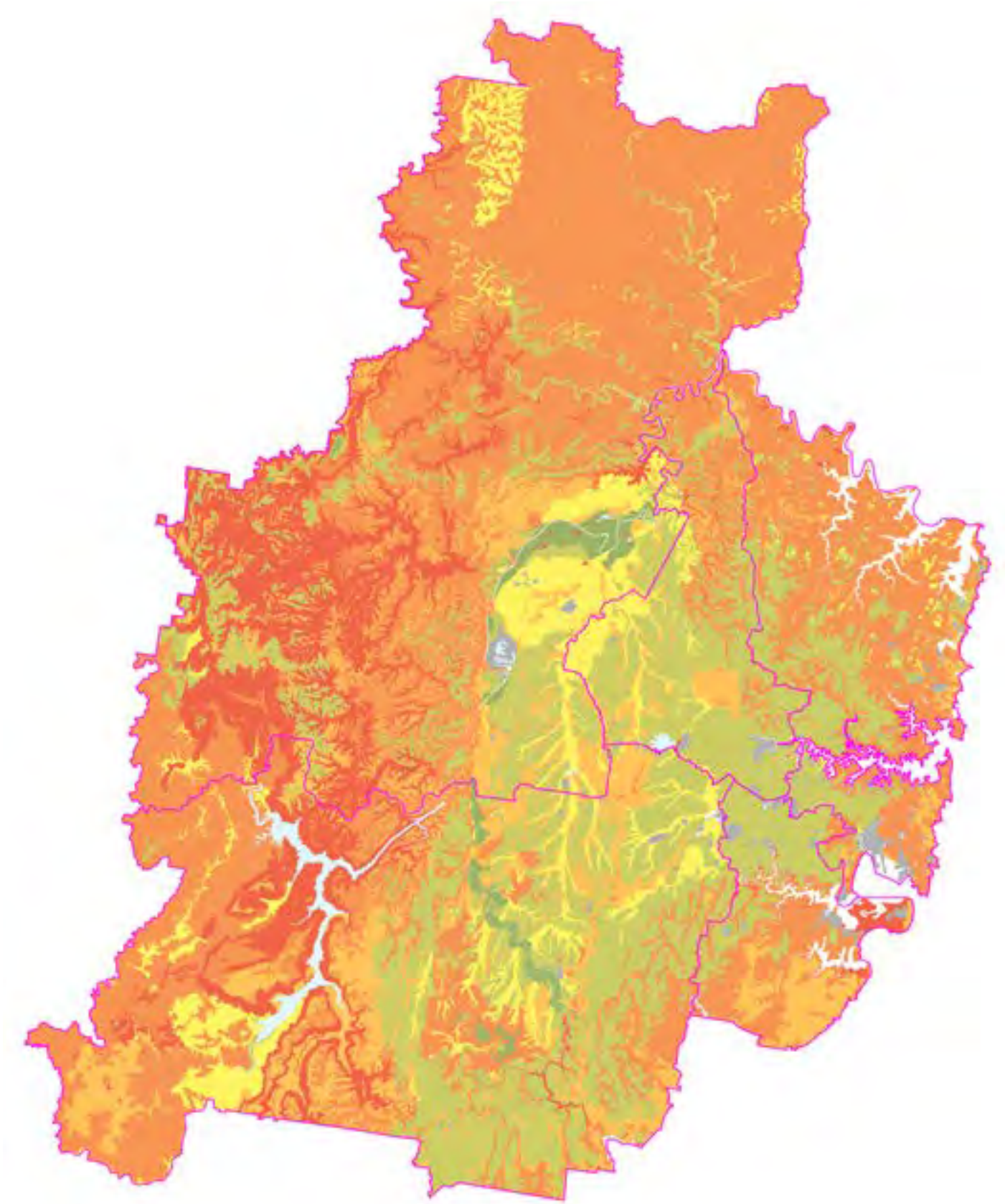
Greater Sydney





Greater Sydney Landform

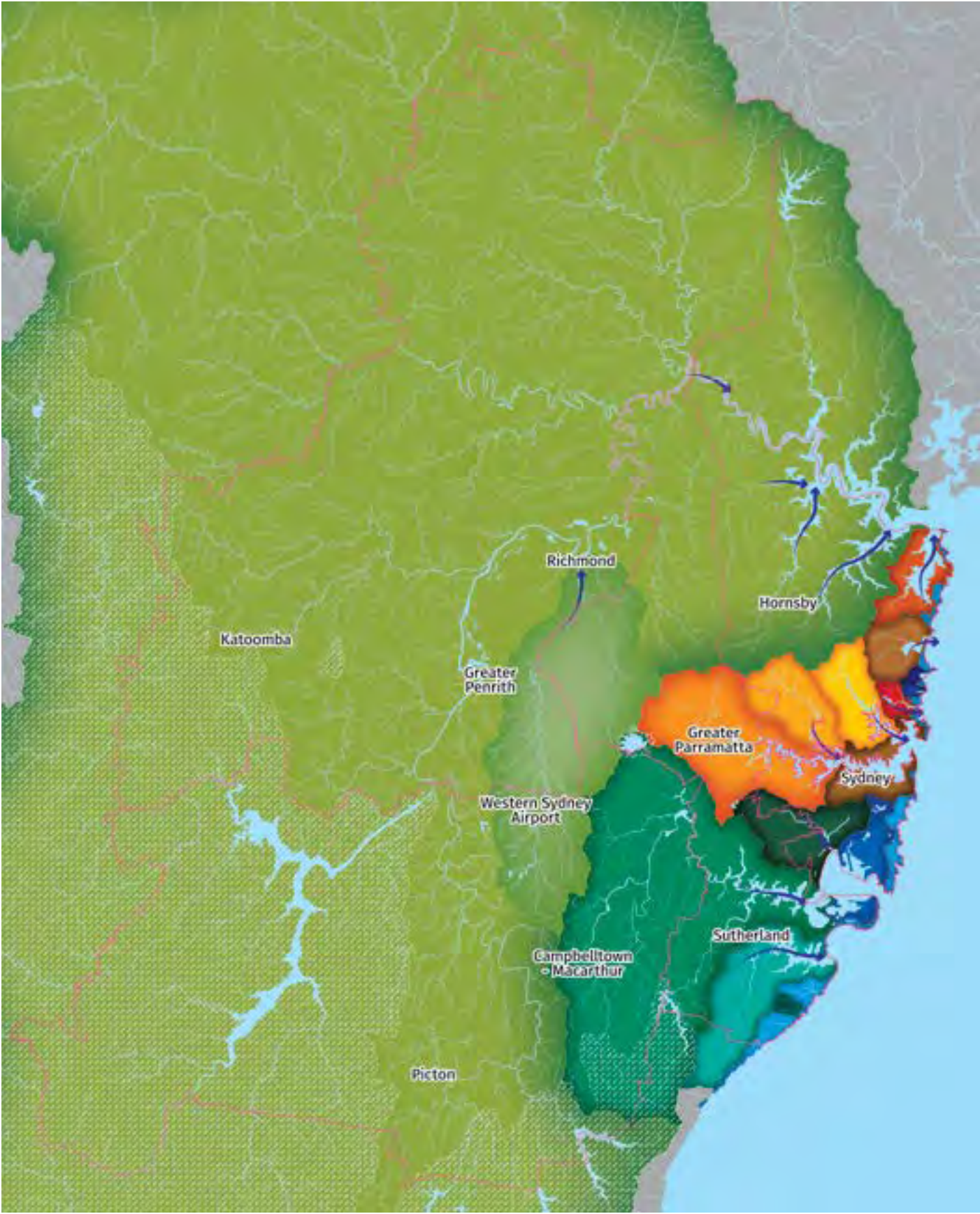
District Boundary	Metropolitan Rural Area	Highway
Local Government Area (LGA)	Western Sydney Parklands	Railway
Suburb Boundary	Waterways	
National Parks and Reserves	Motorway	



Greater Sydney Land and Soil Capability (LSC)

District Boundary	Moderate - Low Capability (Class 5)	Extremely Low Capability (Class 8)
High Capability (Class 3)	Low Capability (Class 6)	Disturbed Terrain
Moderate Capability (Class 4)	Very Low Capability (Class 7)	Waterways

Data Source: Land and Soil Capability Mapping of NSW, Office Environment and Heritage (2012)



Greater Sydney Drainage Catchments

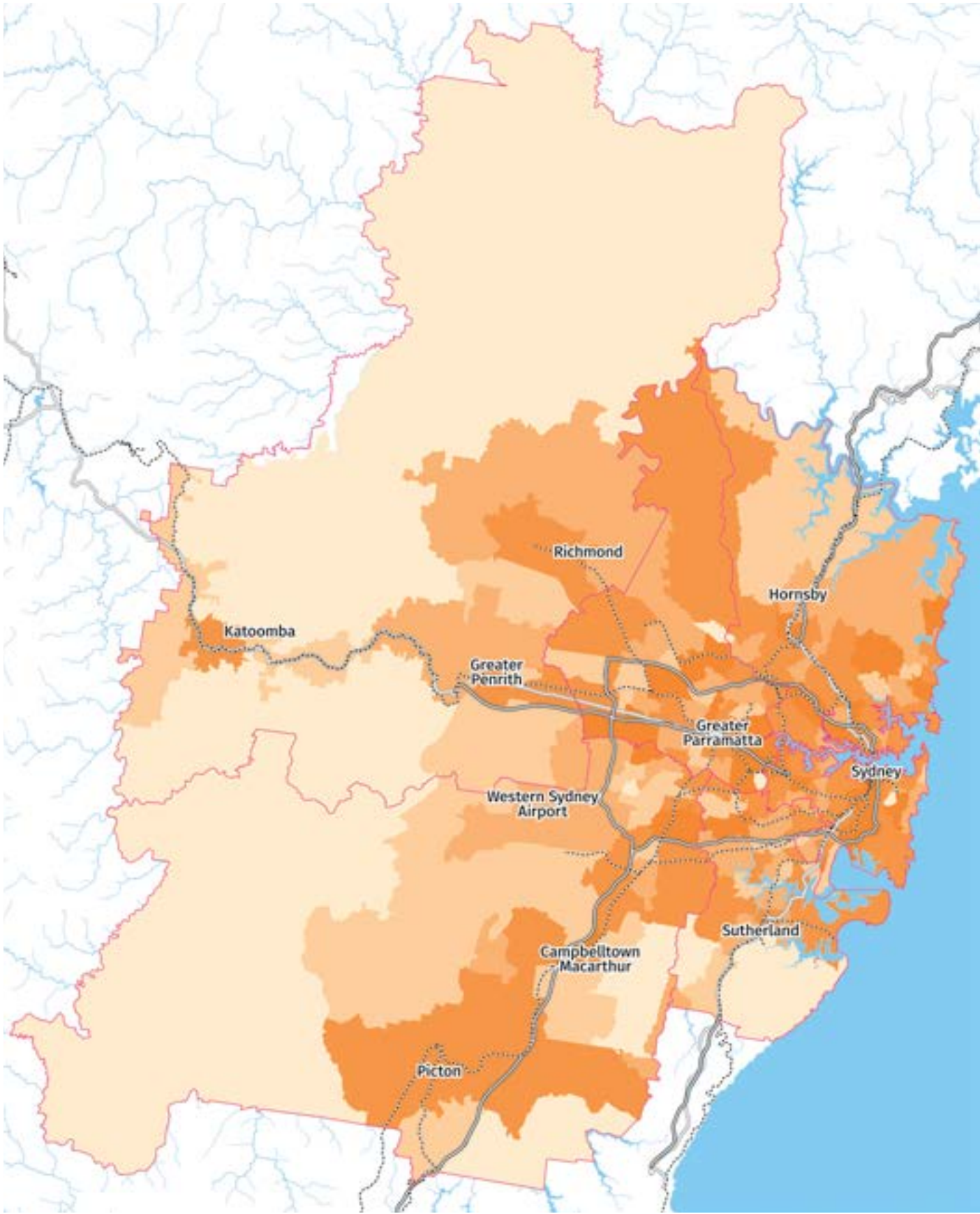
District Boundary	South Creek Subcatchment	Lane Cove River Basin	Port Hacking Basin
River Flow Direction	Cooks River Basin	Manly Lagoon Basin	Wattamolla Creek Basin
Hawkesbury-Nepean River Basin	Port Jackson Basin	Narrabeen Lagoon Basin	Coastal Catchment
Parramatta River Basin	Botany Bay Basin	Middle Harbour Creek Basin	Waterway
Georges River Basin	Pittwater Basin	Dee Why and Curl Curl Lagoon Basin	Drinking Water Catchment



Greater Sydney Hydrology

District Boundary	Streams	Smaller
Waterbodies	Streams	Larger

Data Source: Office Environment and Heritage

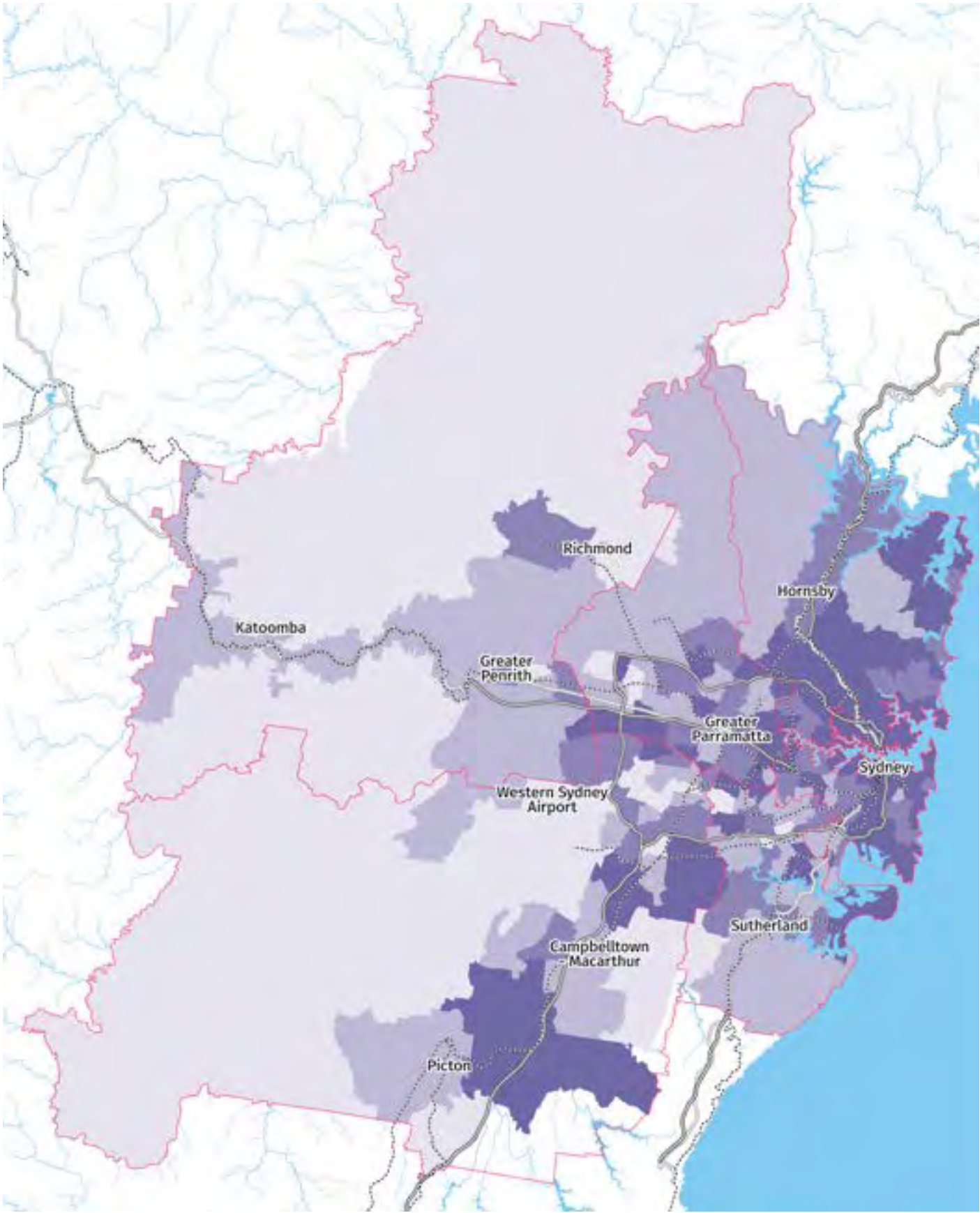


Greater Sydney Gross Added Value (2015)

- District Boundary
- Motorway
- Highway
- Railway

Gross value added (\$ Million)	
less than 90	460-1,390
90-250	1,390-62,400
250-460	greater than 62,400

Source: Australia Bureau of Statistics 5204.0 - Australian System of National Accounts, 2015-16

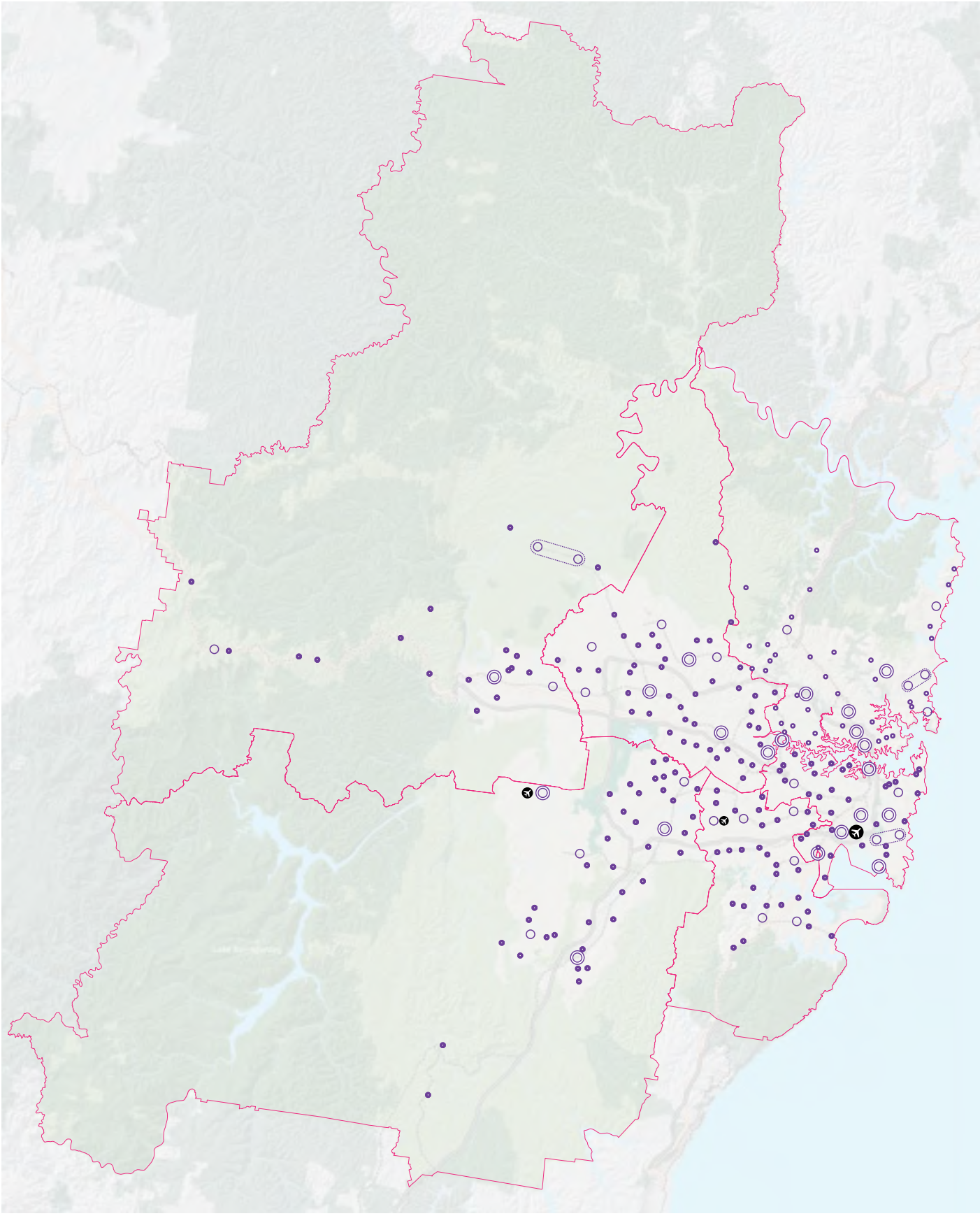


Greater Sydney Labour Productivity (2015)

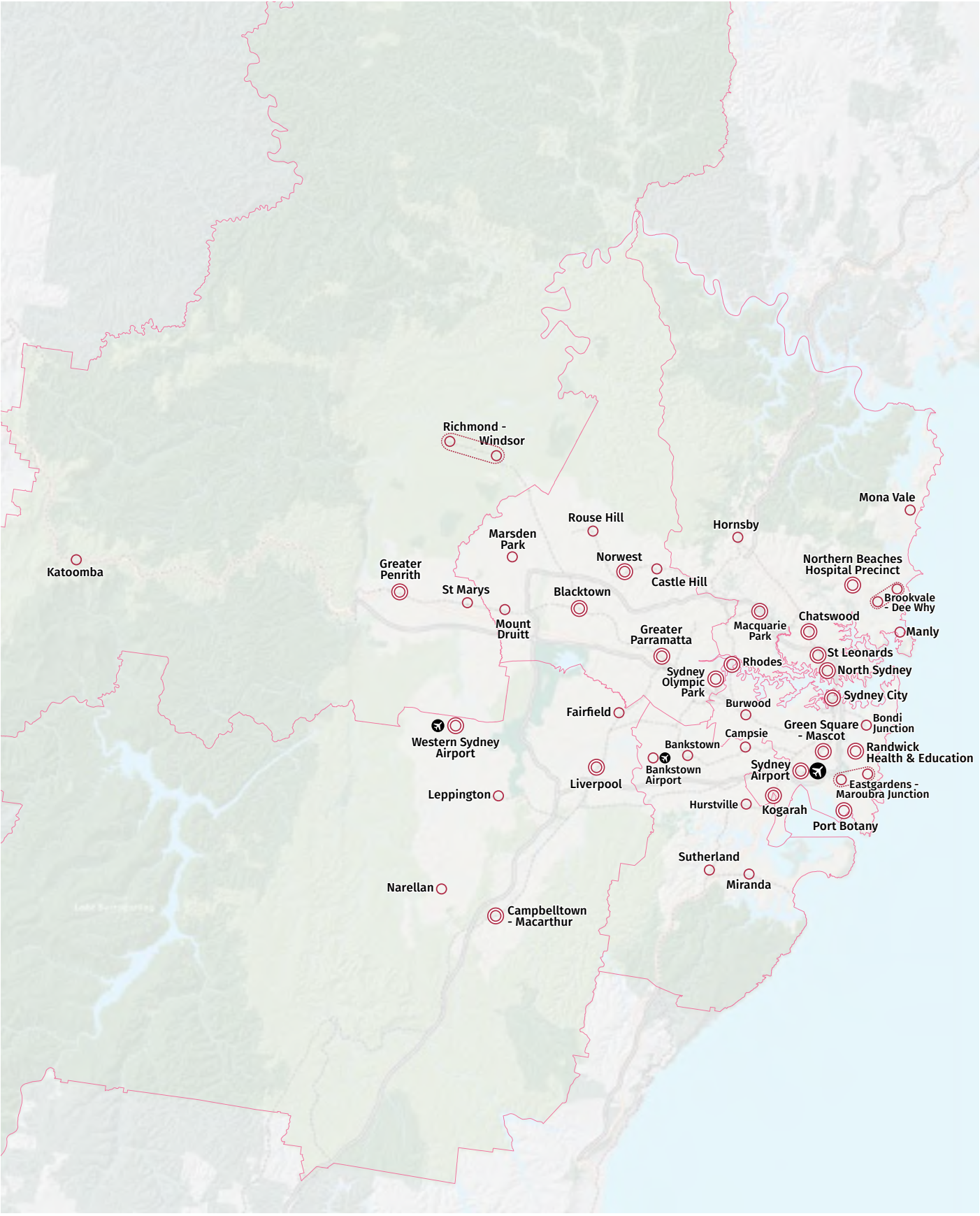
- District Boundary
- Motorway
- Highway
- Railway

Labour productivity (\$/hour worked)	
25-44	55-100
44-50	greater than 100
50-55	

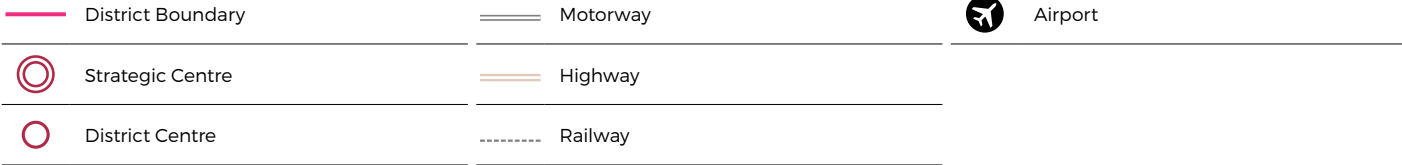
Source: Australia Bureau of Statistics 5204.0 - Australian System of National Accounts, 2015-16

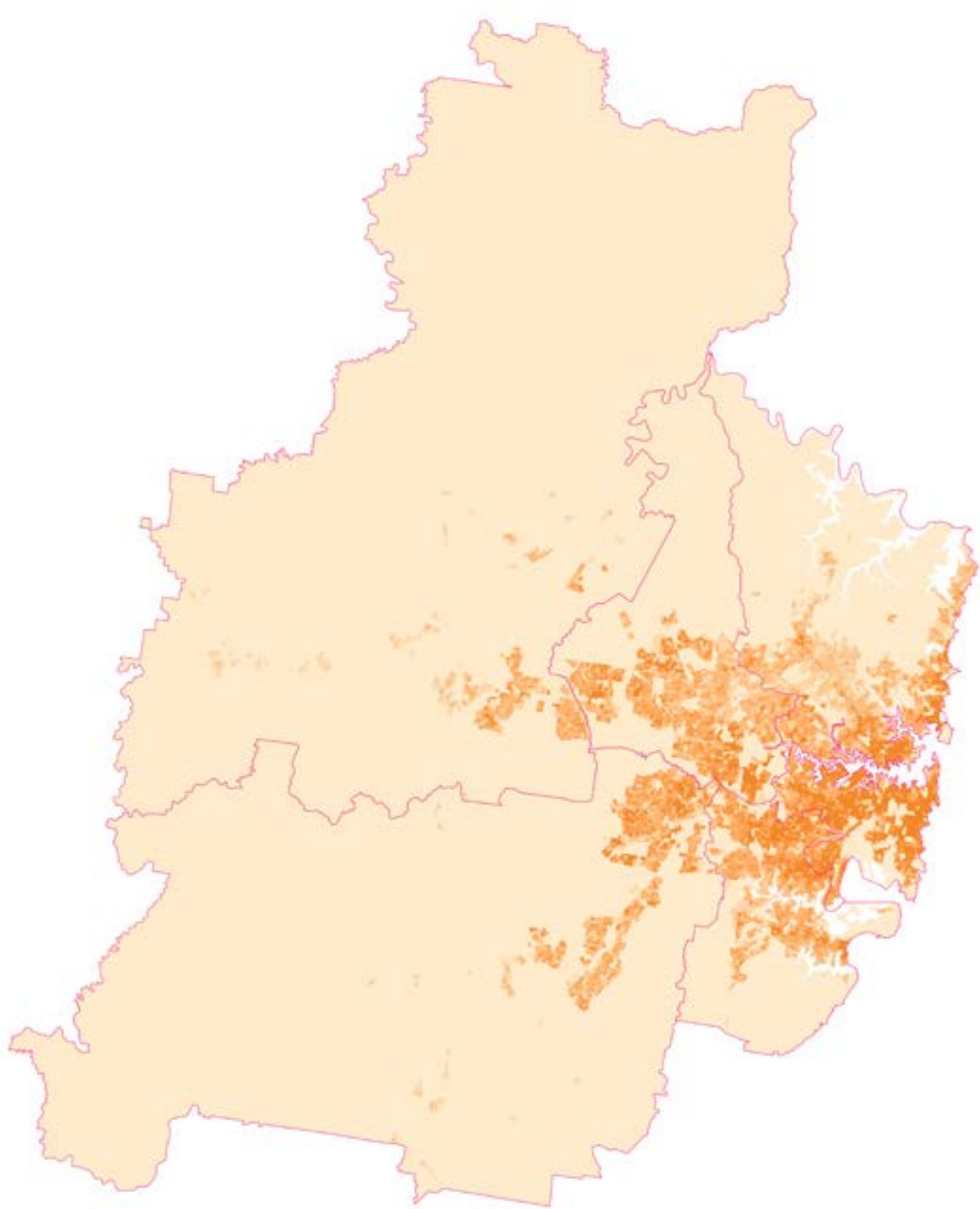


Greater Sydney Local, District and Strategic Centre Distribution



Greater Sydney District and Strategic Centres

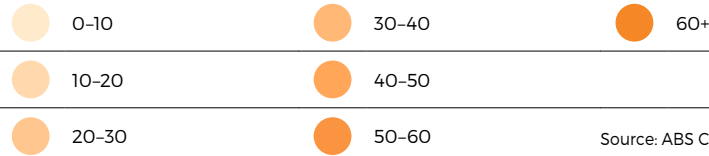




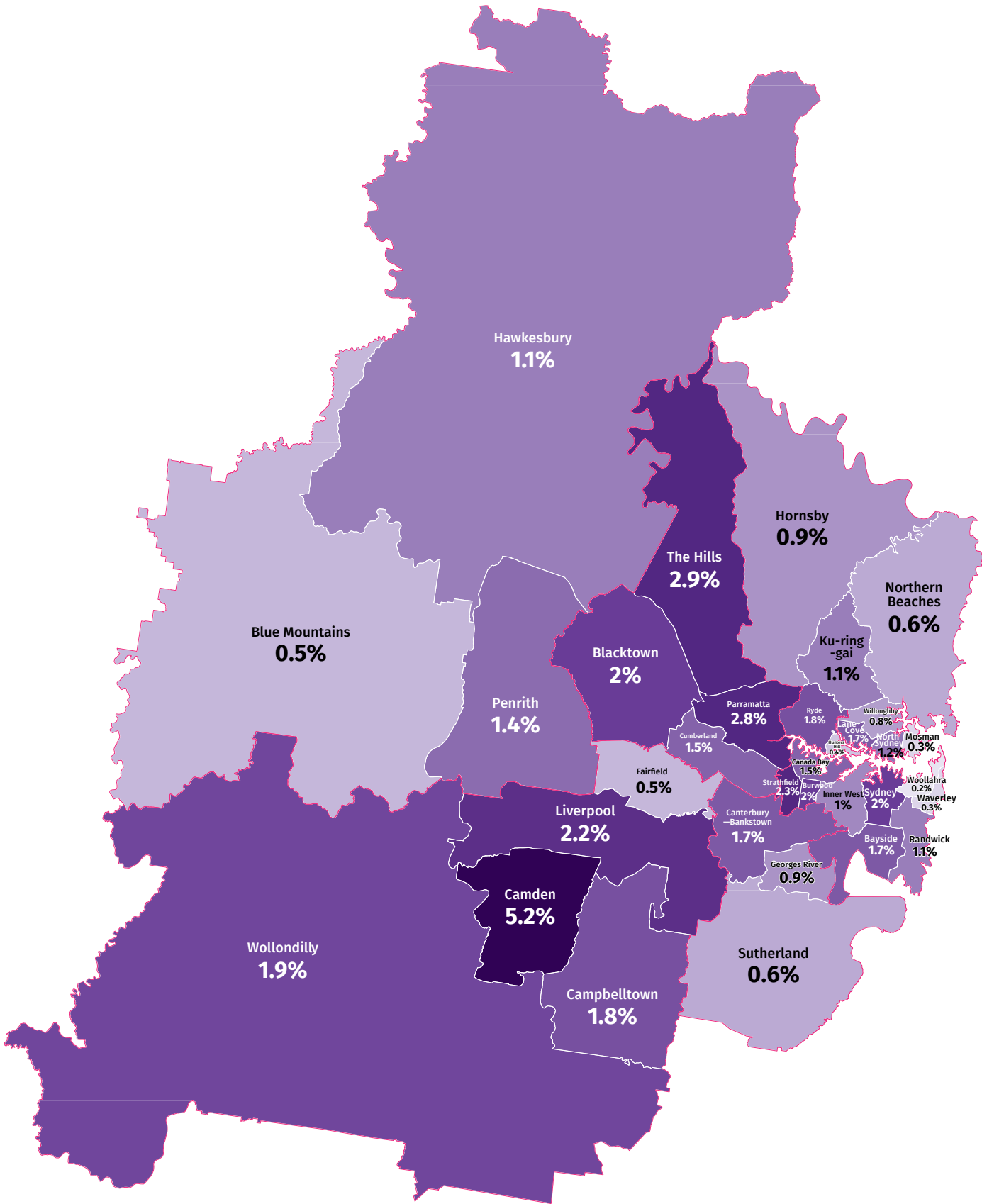
Greater Sydney Net Population Density (2011)

District Boundary

Persons per hectare



Source: ABS Census 2011



Greater Sydney Population Projection (2016-2036)

District Boundary

Source: Department of Planning and Environment 2016

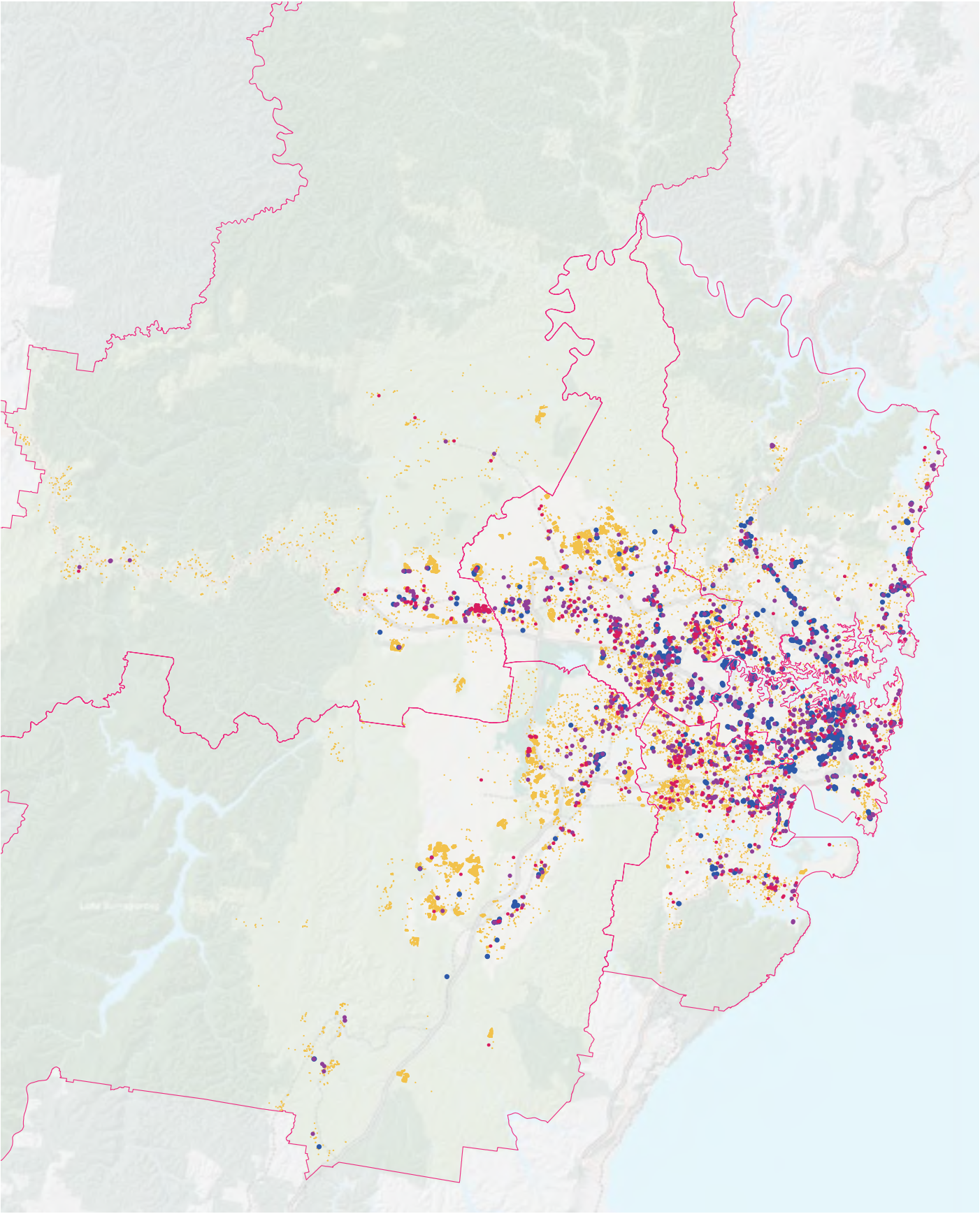
Annual Population Growth Rate 2016-2036, Local Government Area





Housing Market Areas

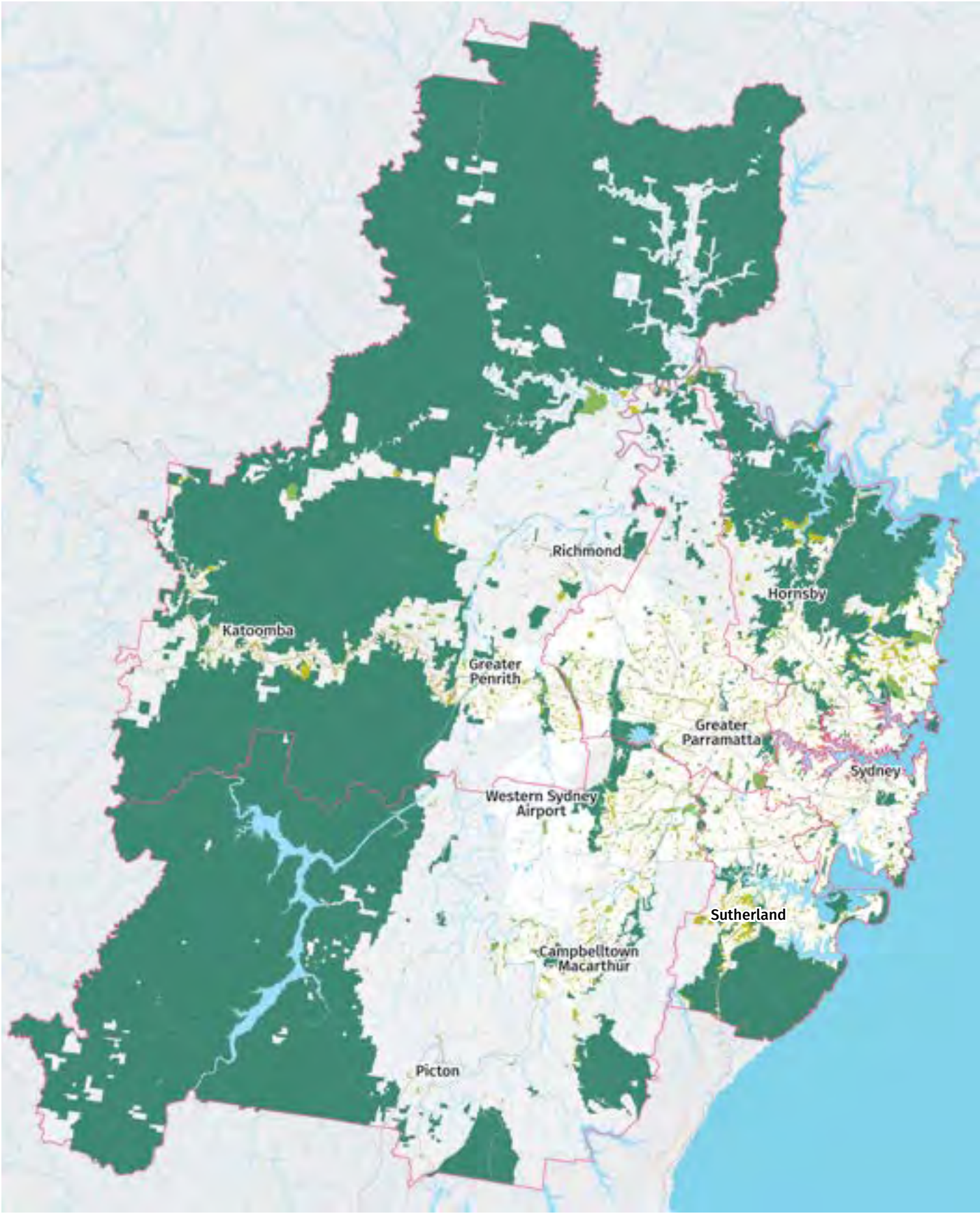
District Boundary	Northern Beaches	Inner West – Burwood	Liverpool	Rouse Hill – Dural
Motorway	North Shore	Eastern Shore	North West	South West
Highway	Central North	St George	Penrith – Blue Mountains	Sutherland
Railway	City and Harbour-side	Bankstown – Holsworthy	Blacktown – Marayong	Source: Department of Planning and Environment 2016
Waterway	Inner West – Marrickville	Fairfield	Parramatta	



Greater Sydney Net increase in Housing FY2011-2016

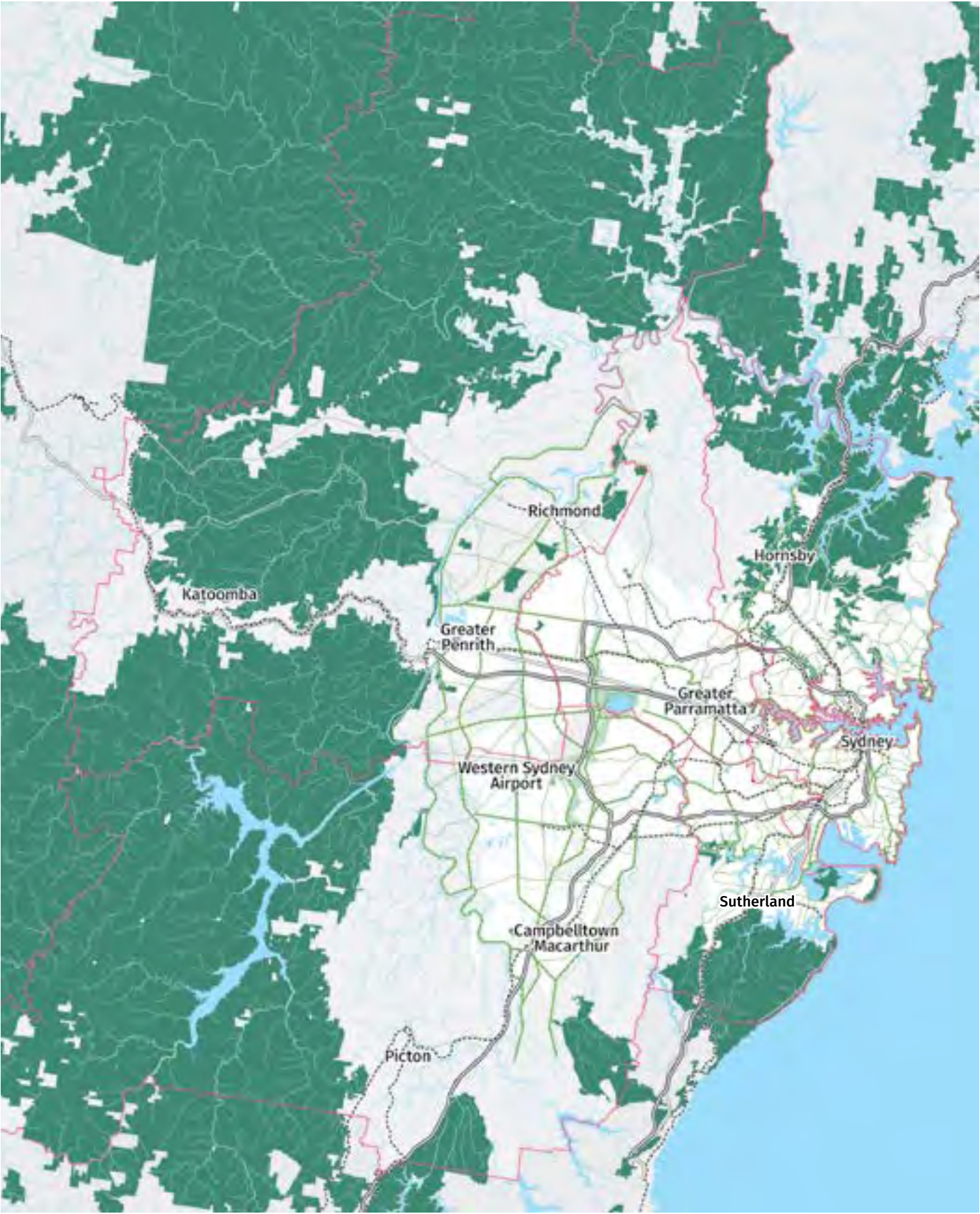
District Boundary	1-2 Dwellings	Source: Department of Planning and Environment 2016
Motorway	3-5 Dwellings	
Highway	6-20 Dwellings	
Railway	21+ Dwellings	





Greater Sydney Open Space

District Boundary	Local Open Space	Metropolitan Rural Area
Regional Open Space	Waterways	
District Open Space	Urban Area	



Greater Sydney Green Grid Opportunities

District Boundary	Motorway	National Parks and Reserves
District Open Space	Highway	Metropolitan Rural Area
Local Open Space	Railway	Waterways