



Ecos

South District



District Suburbs



District Centre

— District Boundary

Local Government Boundary



 Airport

Urban Area

Metropolitan Rural Area

Waterways

 National Parks and Reserves

||||||| Railway

IIII●IIII Railway Station

 Motorway

 Highway





Centres	
	Strategic Centre
	District Centre
	Local Centre
	District Boundary
	Airport
	Urban Area
	Metropolitan Rural Area
	National Parks and Reserves
	Waterways
	Railway
	Railway Station
	Motorway
	Highway
	Roads

Green Grid Opportunities

	Strategic Centre
	District Centre
	District Boundary
	Green Grid Opportunities (Major)
	Green Grid Opportunities (Other)
	Priority Projects
	Projects Important to District
	Waterways
	National Parks and Reserves
	Railway
	Railway Station
	Motorway
	Highway
	Roads



Priority Projects:

1 Cooks River Open Space Corridor

Will become a regionally significant parkland corridor, with improved water quality and high quality open spaces that link to Strathfield, Sydney Olympic Park, Campsie, Canterbury, Dulwich Hill, Marrickville and Wolli Creek. This is a priority project for the South and Central Districts.

2 Wolli Creek Regional Park and Bardwell Valley Parkland

Straddles the boundary of the South and Central Districts and will provide open space for recreation, walking and cycling trails, connected patches of ecologically significant vegetation and improved water quality and stormwater management. It will also connect to other Green Grid projects and is a priority Green Grid project for both Districts.

3 Salt Pan Creek Open Space Corridor

Contains important ecological communities, mangroves, wetlands, recreational facilities and walking and cycling trails on both sides of the creek. The project aims to strengthen the connection between Bankstown CBD and Salt Pan Creek, improve trails and recreational opportunities, and improve bridge crossings and connections to Bankstown, Punchbowl, Riverwood, Padstow, Peakhurst and Lugarno.

Other important projects to deliver Sydney's Green Grid in the South District:

4 The Coastal Walk: Botany Bay Foreshores

Delivering major missing links between Taren Point Bridge and Shell Point to connect to an open space corridor across Taren Point Bridge and onward to the eastern and northern shores of Botany Bay.

5 Illawarra Rail Line Corridor: Kogarah to Sutherland

Integrating walking and cycling paths with open spaces, green urban areas and stormwater treatment along the excess rail easement lands and parallel local streets and centres along the rail line including Kogarah, Hurstville and Sutherland.

6 Bankstown to Sydenham Open Space Corridor

Integrating low levels of existing active open space by transforming surplus rail easement land and wide local streets that run parallel to the rail line into a multi-purpose public open space corridor connecting Cooks River, Wolli Creek Regional Park, The Greenway and Salt Pan Creek Open Space Corridor.

7 The Coastal Walk: Kurnell to the Royal National Park

Using Cronulla as a starting point for a cluster of projects that connects to Kamay Botany Bay National Park and Bonna Point Reserve. The Boat Harbour site and the beach to the south west are important missing links in the coastal walk from Kurnell to Cronulla.

8 Georges River Parklands

Enhancing ecological, hydrological and recreational areas for the District and connecting the parklands to protect and enhance threatened ecological communities, improve water quality and stormwater treatment, improve access to the river and parklands and create a continuous walking and cycling trail.

9 Kia'Mia Way River Foreshores Walk

Creating linked foreshore access from Menai and Woronora to the Georges River along Still Creek, Woronora River and Mill Creek.





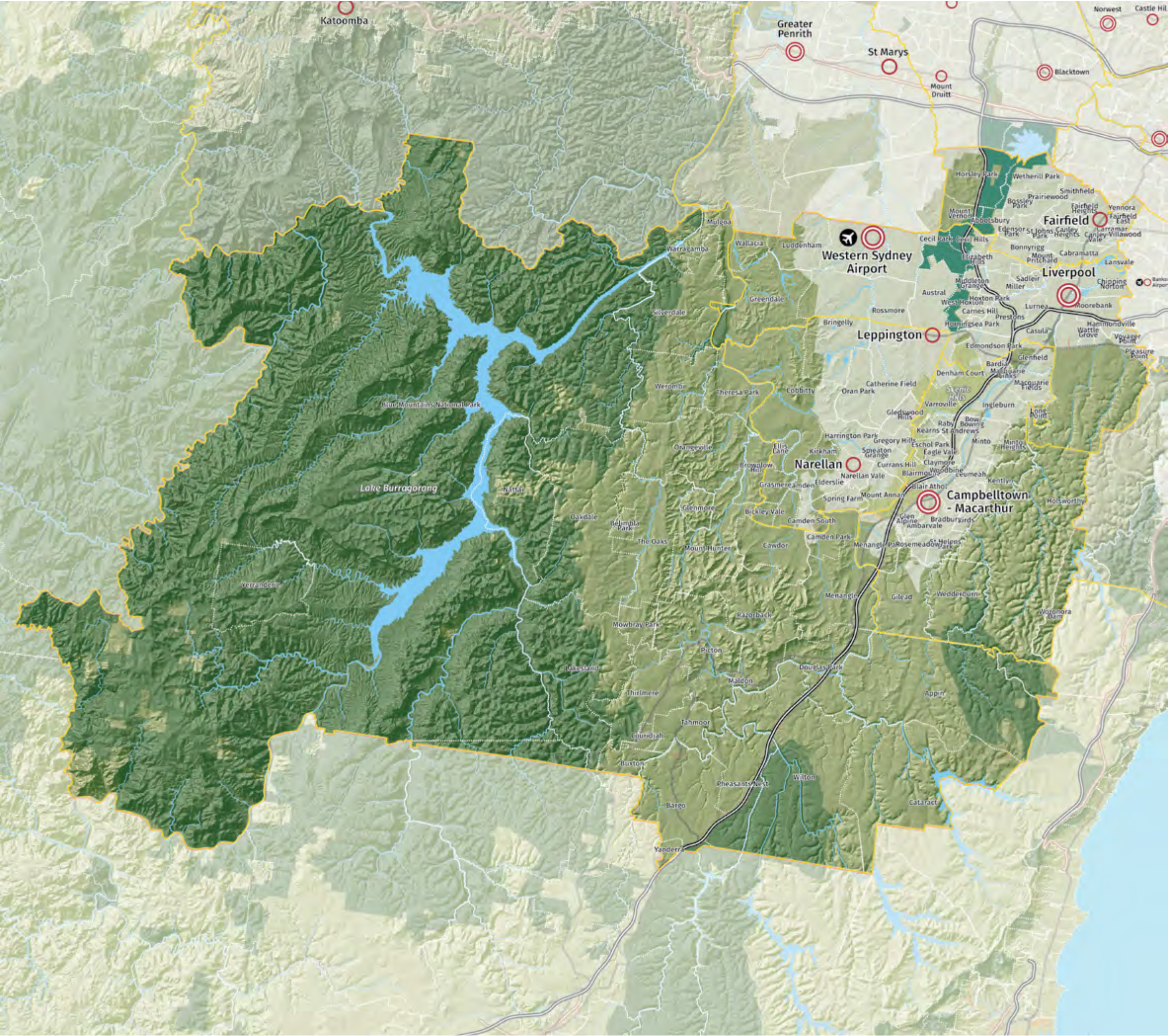
THE
SLOW
DOWN

South West District



District Suburbs

- Strategic Centre
- District Centre
- District Boundary
- Local Government Boundary
- Airport
- Urban Area
- Metropolitan Rural Area
- Waterways
- National Parks and Reserves
- Railway
- Motorway
- Highway



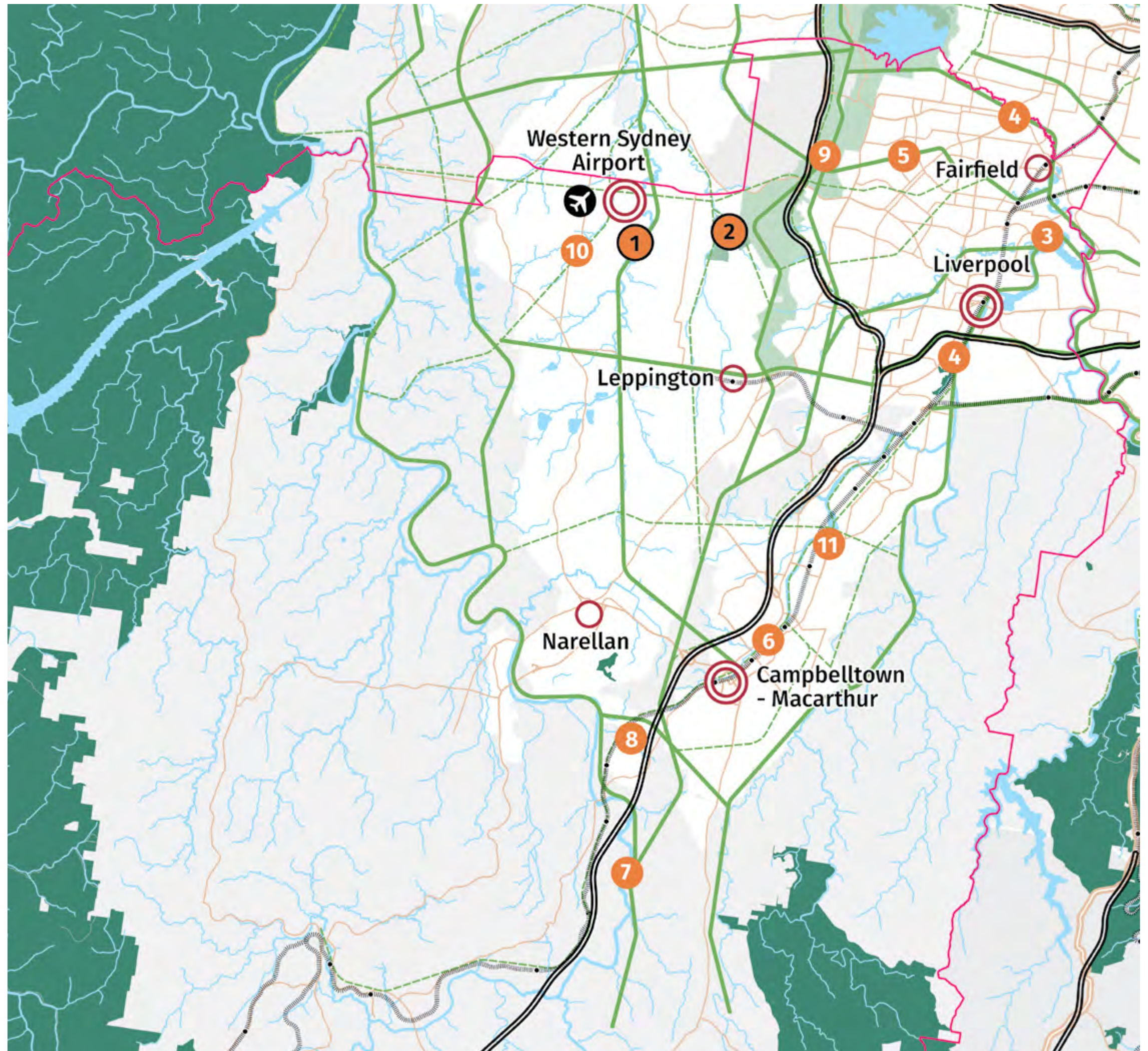


Centres

- Strategic Centre
- District Centre
- Local Centre
- District Boundary
- Airport
- Urban Area
- Metropolitan Rural Area
- National Parks and Reserves
- Waterways
- Railway
- Railway Station
- Motorway
- Highway
- Roads

Green Grid Opportunities

	Strategic Centre
	District Centre
	District Boundary
	Green Grid Opportunities (Major)
	Green Grid Opportunities (Other)
	Priority Projects
	Projects Important to District
	Waterways
	National Parks and Reserves
	Railway
	Railway Station
	Motorway
	Highway
	Roads



Priority Projects:

① South Creek Corridor

Creating a continuous open space corridor along the entirety of South Creek that provides ecological protection and enhancement, better stormwater treatment and a regionally significant corridor for recreation uses.

② Kemps Creek and Kemps Creek Nature Reserve

Creating a regionally significant open space corridor that provides ecological protection and enhancement, improved water quality and recreational opportunities for growing communities around Kemps Creek. While Kemps Creek Nature Reserve is not accessible to the public, it can form part of an important corridor with a mix of conservation areas and areas open to the public for recreation.

Other important projects to deliver Sydney's Green Grid in the South West District:

③ Georges River Parklands and Chipping Norton Lakes

enhancing the Georges River as a regional open space and active transport corridor, as well as protecting and enhancing the wetlands, ecological communities and improving stormwater management from surrounding development.

④ Prospect Creek and Prospect Reservoir Parklands

creating a continuous open space and active transport corridor from the Western Sydney Parklands and Prospect Reservoir to the Georges River.

⑤ Five Fairfield Creeks – Clear Paddock and Cabramatta Creeks

creating a continuous network of high quality parklands and active transport corridors for the region, from the Western Sydney Parklands to the Georges River. The Five Fairfield Creeks are a network of creeks that flow into the Georges River at Chipping Norton Lakes. They are Cabramatta Creek, Hinchinbrook Creek, Clear Paddock Creek, Orphan School Creek and Green Valley Creek.

⑥ Bunbury Curran Creek and Bow Bowing Creek

using the open space corridors along the creeks to provide open space, urban greening, active transport and stormwater treatment along the corridor

⑦ The Upper Canal

protecting drinking water infrastructure while making use of the space along the canal as open space, urban greening and active transport corridor.

⑧ Camden Park and Menangle to Georges River Open Space Corridor

connecting a band of open space in a unique geographic setting where the Nepean and Georges River are only four kilometres apart.

⑨ Western Sydney Parklands and Eastern Creek

improving connectivity from adjacent Green Grid projects into the Western Sydney Parklands.

⑩ South Western Creeks, Badgerys and Cosgrove Creeks

planning for open space along tributaries of South Creek that will play an important role in providing open space for growing communities in the South West Priority Growth Area.

⑪ Kayess Park Open Space Corridor, Ingleburn

creating an east west open space corridor that connects Georges River to communities at Ingleburn, Minto, Bow Bowing and Raby.

